

For patients with at least a partial response to upfront treatment for high-risk neuroblastoma, IWILFIN may help reduce the risk of relapse

“I will do all I can to protect my child from relapse.”

The first and only oral maintenance therapy shown to cut the risk of high-risk neuroblastoma relapse in half



Patient portrayals throughout.

iwilfin[®] 
(eflornithine) tablets

partners in protection

WHAT IS IWILFIN?

IWILFIN is a prescription medicine used to reduce the risk of relapse in adults and children with high-risk neuroblastoma (HRNB) who have had at least a partial response to certain prior therapies.

IMPORTANT SAFETY INFORMATION

Before you take IWILFIN, tell your healthcare provider about your medical conditions, including if you have hearing problems, if you are pregnant or may become pregnant, or if you are breastfeeding.




Please see additional Important Safety Information throughout and accompanying full Prescribing Information.

What do I need to know about high-risk neuroblastoma relapse?

Despite completing a lengthy and aggressive standard of care regimen for high-risk neuroblastoma, your child may still be at risk for relapse.

**3 out of 10 children
will experience relapse
after completion of
upfront therapy**



-  Relapse risk is higher in the first few years after achieving remission
-  Rates of overall survival significantly worsen with relapse
-  A return to active disease further exposes a child to aggressive treatments

Maintenance therapy could offer an additional layer of protection against relapse

The addition of maintenance therapy following upfront treatment may help to maintain your child's response, decrease the chance of relapse, and improve their overall chance of survival.

IWILFIN is the first and only oral maintenance therapy that may help reduce the risk of your child's high-risk neuroblastoma from returning.

IMPORTANT SAFETY INFORMATION (CONT'D)

Hearing loss is common during treatment with IWILFIN and can be serious. Some people have needed to use hearing aids. Tell your healthcare provider right away if you get ringing in your ears or any new or worsening hearing loss.

What is IWILFIN?

IWILFIN is a maintenance therapy used for reducing the risk of relapse in children with high-risk neuroblastoma. IWILFIN is an oral pill, conveniently taken at home, prescribed once your child has had at least a partial response to upfront treatment, such as chemotherapy and immunotherapy.

Where would IWILFIN be added into my child's treatment plan?



IWILFIN provides an alternative to watchful waiting by allowing you and your child's doctor to take an active role in protecting your child against relapse



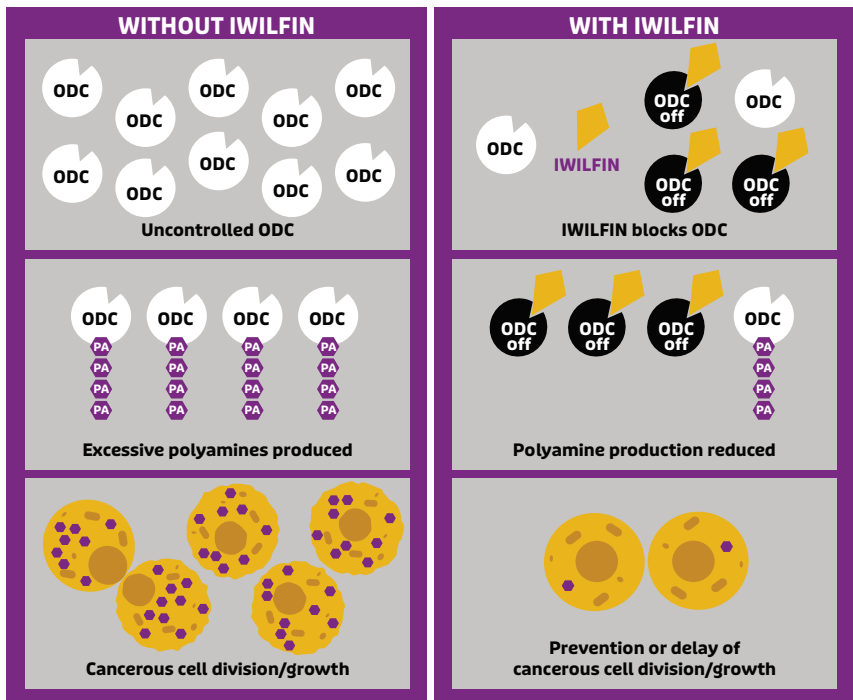
Please see additional Important Safety Information throughout and accompanying full Prescribing Information.

How does IWILFIN work?

IWILFIN is a targeted therapy that disrupts the polyamine pathway that plays a role in tumor growth and development.

Also known as difluoromethylornithine (DFMO), IWILFIN works by blocking an enzyme called ornithine decarboxylase (ODC). ODC is responsible for producing polyamines (PAs), which are important to tumor formation and growth.

How IWILFIN works in high-risk neuroblastoma



IMPORTANT SAFETY INFORMATION (CONT'D)

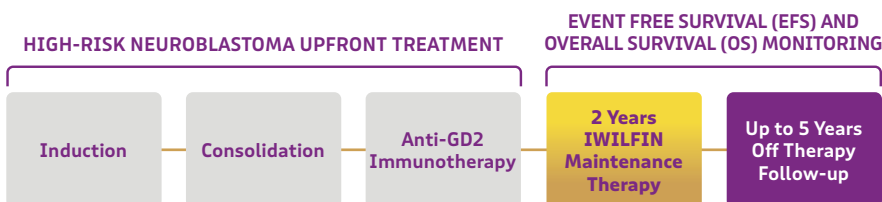
IWILFIN can cause low blood cell counts. Tell your healthcare provider right away if you develop symptoms of low blood cell counts, including fever, easy bruising or bleeding, blood in your urine or stool, feeling unusually tired or weak, shortness of breath, or chills or shivering.

“I will keep fighting for my child’s future.”

How was IWILFIN studied?

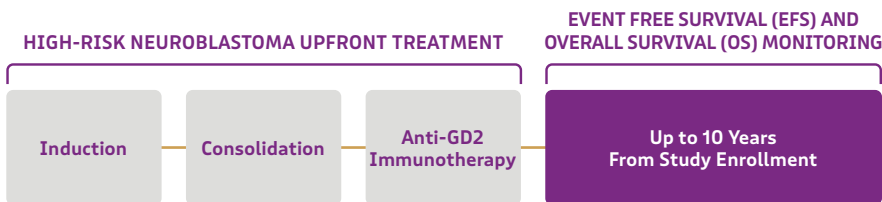
IWILFIN was assessed in Study 3b, a clinical trial examining its safety and efficacy in 105 pediatric patients with high-risk neuroblastoma. All patients received IWILFIN twice daily for up to 2 years after achieving remission from upfront therapy.

Study 3b—IWILFIN Investigational Trial



Study ANBL0032—External Control

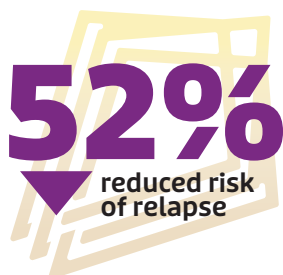
To assess the outcomes of Study 3b, results were compared to an external control database of similar high-risk neuroblastoma patients from another trial—Study ANBL0032, which studied pediatric patients who also achieved remission after upfront treatment but who did not go on to receive IWILFIN.



Learn more about how IWILFIN was studied at IWILFIN.com

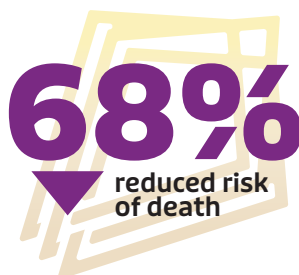
Please see additional Important Safety Information throughout and accompanying full Prescribing Information.

What is the effect of IWILFIN in children with high-risk neuroblastoma?



In the clinical trial, patients who received IWILFIN had a 52% reduced risk of relapse.

The primary endpoint of this study was event free survival, defined as no disease progression, relapse, secondary cancer, or death due to any cause. In supplementary analyses, the reduced risk of relapse for patients taking IWILFIN ranged from 57% to 41%.



In the clinical trial, patients who received IWILFIN had a 68% reduced risk of death.





The secondary endpoint of this study was overall survival, defined as death due to any cause. In supplementary analyses, the reduced risk of death for patients taking IWILFIN ranged from 71% to 55%.

IMPORTANT SAFETY INFORMATION (CONT'D)

IWILFIN can cause liver problems. Tell your healthcare provider right away if you develop symptoms of liver problems, including your skin or white of your eyes turning yellow; dark urine; light-colored stools; nausea or vomiting; easy bruising or bleeding; loss of appetite; or pain, aching, or tenderness on the right side of your abdomen.

What were the most serious side effects of IWILFIN?

In clinical studies, IWILFIN was generally well tolerated, and side effects were manageable.

-  Hearing loss is common during treatment with IWILFIN and can be serious. During clinical trials, hearing loss was sometimes reversible by adjusting the IWILFIN dosage
-  IWILFIN could cause low blood counts and failure of bone marrow to make enough platelets, red blood cells, or white blood cells. Blood count monitoring will occur before starting and during treatment with IWILFIN
-  IWILFIN could cause liver problems. Blood tests to monitor liver function will occur before starting and during treatment with IWILFIN
-  The most common side effects of IWILFIN were hearing loss, ear infection, fever, pneumonia, and diarrhea

Side Effects in IWILFIN Clinical Trials (N=360)*

Side Effect	Percentage
Hearing loss	11%
Ear infection	10%
Fever	7%
Pneumonia	5%
Diarrhea	5%

*Pooled safety population (N=360) reflects patients in Study 3b and another IWILFIN trial, Study 14

There are no known contraindications for IWILFIN.

Please see additional Important Safety Information throughout and accompanying full Prescribing Information.

iwilfin[®] (eflornithine) tablets

partners in protection

How is IWILFIN taken?

IWILFIN offers the convenience and flexibility of at-home use.



- 1 to 4 tablets taken twice daily for 2 years
- Can be taken with or without food
- May be chewed, or crushed and mixed with 2 tablespoons of soft food or liquid
- Store at room temperature (between 68°F-77°F)



IMPORTANT SAFETY INFORMATION (CONT'D)

If you or your partner are able to become pregnant, use effective birth control during treatment with IWILFIN and for 1 week after the last dose. Tell your healthcare provider right away if you or your partner become pregnant during treatment. Do not breastfeed during treatment with IWILFIN and for 1 week after the last dose.

“I will continue to protect my child from high-risk neuroblastoma.”

What support is available to me and my child?



IWILFIN Cares is a patient support program designed to help patients start and stay on therapy. Once your child has been prescribed IWILFIN, a team of dedicated specialists will be available to support various aspects of your IWILFIN treatment journey.

IWILFIN Cares provides the following services:



Insurance Coverage Determination

A Support Specialist will work closely with you and your healthcare team to determine your child's insurance coverage for IWILFIN.



Financial Support Eligibility

If you need assistance paying for IWILFIN, a Support Specialist will share financial support options for which you may be eligible.



Coordinated Home Delivery

Once your child's prescription is approved, our single-source specialty pharmacy will conveniently ship IWILFIN straight to your doorstep, help manage your refills, and provide you with 24/7 pharmacist access.

For more information, go to IWILFIN.com or call 877-IWILFIN (494-5346) and select Option 1.

Please see additional Important Safety Information throughout and accompanying full Prescribing Information.

The inspiration behind IWILFIN

The name IWILFIN was inspired by 2 high-risk neuroblastoma survivors, Will and Finn. Their bravery and treatment outcomes helped pave the way for the wider development of this breakthrough maintenance therapy.



About Will

Will was diagnosed with high-risk neuroblastoma as an infant. He underwent a 7-year treatment journey, which included being a participant in the first phase 1 investigational trial conducted for IWILFIN. Will is now an adult, and the results of his participation in that first trial paved the way for the continued development of IWILFIN.

Real patient.



About Finn

Finn was diagnosed with Stage 4, MYCN-amplified, high-risk neuroblastoma at 3 months old. After a long and difficult upfront treatment journey, Finn achieved remission and went on to receive IWILFIN as maintenance therapy for 2 years. Finn received his final dose of IWILFIN in 2022, just in time for his promotion to big brother.

Real patient.

WHAT IS IWILFIN?

IWILFIN is a prescription medicine used to reduce the risk of relapse in adults and children with high-risk neuroblastoma (HRNB) who have had at least a partial response to certain prior therapies.

IMPORANT SAFETY INFORMATION

Before you take IWILFIN, tell your healthcare provider about your medical conditions, including if you have hearing problems, if you are pregnant or may become pregnant, or if you are breastfeeding.

If you or your partner are able to become pregnant, use effective birth control during treatment with IWILFIN and for 1 week after the last dose. Tell your healthcare provider right away if you or your partner become pregnant during treatment. Do not breastfeed during treatment with IWILFIN and for 1 week after the last dose.

IWILFIN can cause low blood cell counts. Tell your healthcare provider right away if you develop symptoms of low blood cell counts, including fever, easy bruising or bleeding, blood in your urine or stool, feeling unusually tired or weak, shortness of breath, or chills or shivering.

IWILFIN can cause liver problems. Tell your healthcare provider right away if you develop symptoms of liver problems, including your skin or white of your eyes turning yellow; dark urine; light-colored stools; nausea or vomiting; easy bruising or bleeding; loss of appetite; or pain, aching, or tenderness on the right side of your abdomen.

Hearing loss is common during treatment with IWILFIN and can be serious. Some people have needed to use hearing aids. Tell your healthcare provider right away if you get ringing in your ears or any new or worsening hearing loss.

What are the possible side effects of IWILFIN?

The most common side effects of IWILFIN in Study 3b included ear infection; diarrhea; cough; sinus infection; pneumonia; upper respiratory tract infection; pink eye; vomiting; stuffy, runny, itchy nose or sneezing; fever; skin infection; and urinary tract infection.

These are not all the possible side effects of IWILFIN. Contact your healthcare provider for medical advice about side effects. You may report side effects to FDA at 1-800-FDA-1088.

Please see accompanying full Prescribing Information.

For patients with at least a partial response to upfront treatment for high-risk neuroblastoma, IWILFIN may help reduce the risk of relapse

“I will do all I can to protect my child from relapse.”

The first and only oral maintenance therapy shown to cut the risk of high-risk neuroblastoma relapse in half



Cuts the risk of relapse in half

In the clinical trial, the risk of relapse was reduced by 52% for patients taking IWILFIN



Convenient to use

1 to 4 tablets taken twice daily, at home or wherever you are



Well tolerated with manageable side effects

The most common side effects for IWILFIN were hearing loss (11%), ear infection (10%), fever (7%), pneumonia (5%), and diarrhea (5%)

iwilfin[®]
(eflornithine) tablets

partners in protection

Learn more at IWILFIN.com

Talk to your doctor about whether maintenance therapy with IWILFIN is right for your child

IMPORTANT SAFETY INFORMATION (CONT'D)

What are the possible side effects of IWILFIN?

The most common side effects of IWILFIN in Study 3b included ear infection; diarrhea; cough; sinus infection; pneumonia; upper respiratory tract infection; pink eye; vomiting; stuffy, runny, itchy nose or sneezing; fever; skin infection; and urinary tract infection.

These are not all the possible side effects of IWILFIN. Contact your healthcare provider for medical advice about side effects. You may report side effects to FDA at 1-800-FDA-1088.

Please see additional Important Safety Information throughout and accompanying full Prescribing Information.

4441 Springdale Rd, Louisville, KY 40241
©2025, USWM, LLC. All rights reserved.
IWILFIN is a registered trademark of USWM, LLC.
03/2025 USWMIWI-00183

US Worldmeds[®]

HIGHLIGHTS OF PRESCRIBING INFORMATION

These highlights do not include all the information needed to use IWILFIN™ safely and effectively. See full prescribing information for IWILFIN.

IWILFIN™ (eflornithine) tablets, for oral use
Initial U.S. Approval: 2023

RECENT MAJOR CHANGES

Dosage and Administration (2.3)

11/2024

INDICATIONS AND USAGE

IWILFIN is an ornithine decarboxylase inhibitor indicated to reduce the risk of relapse in adult and pediatric patients with high-risk neuroblastoma (HRNB) who have demonstrated at least a partial response to prior multiagent, multimodality therapy including anti-GD2 immunotherapy. (1)

DOSAGE AND ADMINISTRATION

- Prior to initiation of IWILFIN, perform baseline audiogram, complete blood count, and liver function tests. (2.1, 5.3)
- Recommended dosage of IWILFIN is based on body surface area (*see Table 1*). (2.2)
- IWILFIN is taken orally twice daily with or without food until disease progression, unacceptable toxicity, or for a maximum of two years. (2.2)
- IWILFIN tablets may be swallowed whole, chewed, or crushed and mixed with soft food or liquid. (2.5)

DOSAGE FORMS AND STRENGTHS

Tablets: 192 mg (3)

CONTRAINDICATIONS

None (4)

WARNINGS AND PRECAUTIONS

- **Myelosuppression:** Monitor blood counts before and during treatment with IWILFIN. Withhold, reduce dose, or permanently discontinue based on severity. (5.1)
- **Hepatotoxicity:** Monitor liver function tests before and during treatment with IWILFIN. Withhold, reduce dose, or permanently discontinue based on severity. (5.2)
- **Hearing Loss:** Monitor hearing before and during treatment with IWILFIN. Withhold, reduce dose, or permanently discontinue based on severity. (5.3)
- **Embryo-Fetal Toxicity:** Can cause fetal harm. Advise females of reproductive potential of the potential risk to a fetus and to use effective contraception. (5.4, 8.1, 8.3)

ADVERSE REACTIONS

- Most common adverse reactions (incidence $\geq 5\%$) are hearing loss, otitis media, pyrexia, pneumonia, and diarrhea. (6.1)
- Most common Grade 3 or 4 laboratory abnormalities (incidence $\geq 2\%$) are increased ALT, increased AST, decreased neutrophil count, and decreased hemoglobin. (6.1)

To report SUSPECTED ADVERSE REACTIONS, contact US WorldMeds at 1-877-IWILFIN or FDA at 1-800-FDA-1088 or www.fda.gov/medwatch

USE IN SPECIFIC POPULATIONS

Lactation: Advise not to breastfeed. (8.2)

Renal Impairment: Reduce the dose in patients with estimated Glomerular Filtration Rate (eGFR) < 30 mL/min. (2.3, 8.5, 12.3)

See 17 for PATIENT COUNSELING INFORMATION and FDA-approved patient labeling.

Revised: 11/2024

FULL PRESCRIBING INFORMATION: CONTENTS*

1 INDICATIONS AND USAGE

2 DOSAGE AND ADMINISTRATION

- 2.1 Recommended Testing Before Initiating IWILFIN
- 2.2 Recommended Dosage of IWILFIN
- 2.3 Dosage Recommendations for Renal Impairment
- 2.4 Dosage Modifications for Adverse Reactions
- 2.5 Administration, Crushed Preparation, and Missed Dose Instructions

3 DOSAGE FORMS AND STRENGTHS

4 CONTRAINDICATIONS

5 WARNINGS AND PRECAUTIONS

- 5.1 Myelosuppression
- 5.2 Hepatotoxicity
- 5.3 Hearing Loss
- 5.4 Embryofetal Toxicity

6 ADVERSE REACTIONS

- 6.1 Clinical Trials Experience

8 USE IN SPECIFIC POPULATIONS

- 8.1 Pregnancy
- 8.2 Lactation
- 8.3 Females and Males of Reproductive Potential
- 8.4 Pediatric Use
- 8.5 Renal Impairment

11 DESCRIPTION

12 CLINICAL PHARMACOLOGY

- 12.1 Mechanism of Action
- 12.2 Pharmacodynamics
- 12.3 Pharmacokinetics

13 NONCLINICAL TOXICOLOGY

- 13.1 Carcinogenesis, Mutagenesis, Impairment of Fertility

14 CLINICAL STUDIES

16 HOW SUPPLIED/STORAGE AND HANDLING

17 PATIENT COUNSELING INFORMATION

*Sections or subsections omitted from the full prescribing information are not listed.

FULL PRESCRIBING INFORMATION

1 INDICATIONS AND USAGE

IWILFIN (eflornithine) is indicated to reduce the risk of relapse in adult and pediatric patients with high-risk neuroblastoma (HRNB) who have demonstrated at least a partial response to prior multiagent, multimodality therapy including anti-GD2 immunotherapy.

2 DOSAGE AND ADMINISTRATION

2.1 Recommended Testing Before Initiating IWILFIN

Prior to initiating IWILFIN, perform complete blood count, liver function tests, and baseline audiogram [*see Warnings and Precautions (5.1-5.3)*].

2.2 Recommended Dosage of IWILFIN

The recommended IWILFIN dosage, based on body surface area (BSA), is provided in Table 1.

Administer IWILFIN orally twice daily for two years or until recurrence of disease or unacceptable toxicity.

Recalculate the BSA dosage every 3 months during treatment with IWILFIN.

Table 1: Recommended Dose

Body Surface Area (m ²)	Dosage
>1.5	768 mg (four tablets) orally twice a day
0.75 to 1.5	576 mg (three tablets) orally twice a day
0.5 to < 0.75	384 mg (two tablets) orally twice a day
0.25 to < 0.5	192 mg (one tablet) orally twice a day

2.3 Dosage Recommendations for Renal Impairment

For the treatment of patients with severe renal impairment (eGFR <30 mL/min), reduce the recommended dose of IWILFIN by 50% as described in Table 2 [see Use in Specific Populations (8.5), Clinical Pharmacology (12.3)].

Table 2: IWILFIN Dose Recommendations for Severely Renally Impaired Patients

Body Surface Area (m ²)	Recommended Dosage for Patients with Severe Renal Impairment (eGFR <30 mL/min)
>1.5	384 mg (two tablets) orally twice a day
0.75 to 1.5	384 mg (two tablets) in the morning and 192 mg (one tablet) in the evening
0.5 to < 0.75	192 mg (one tablet) orally twice a day
0.25 to < 0.5	192 mg (one tablet) once a day

2.4 Dosage Modifications for Adverse Reactions

The recommended dose reductions for adverse reactions are provided in Table 3.

Table 3: Recommended IWILFIN Dose Reductions for Toxicity Management

Current Dose	Reduced Dose
768 mg (four tablets) orally twice a day	576 mg (three tablets) orally twice a day
576 mg (three tablets) orally twice a day	384 mg (two tablets) orally twice a day
384 mg (two tablets) orally twice a day	192 mg (one tablet) orally twice a day
192 mg (one tablet) orally twice a day	192 mg (one tablet) orally once daily

If subsequent adverse reactions occur, continue dose reduction until reaching the minimum dose of one 192 mg tablet once per day. Permanently discontinue IWILFIN if the patient is unable to tolerate the minimum dose of 192 mg once daily.

The recommended dosage modifications of IWILFIN for the management of adverse reactions are provided in Table 4.

Table 4: Recommended IWILFIN Dosage Modifications for Adverse Reactions

Adverse Reaction	Severity*	Dosage Modification
Myelosuppression [see Warnings and Precautions (5.1)]		
Neutrophil count decreased	<500/mm ³	Withhold IWILFIN until recovery to ≥500/mm ³ . <ul style="list-style-type: none"> If recovered within 7 days, resume IWILFIN at the same dose. If recovered after 7 days, resume IWILFIN at the next reduced dose level.
Platelet count decreased	<25,000/mm ³	Withhold IWILFIN until recovery to ≥25,000/mm ³ . <ul style="list-style-type: none"> If recovered within 7 days, resume IWILFIN at the same dose. If recovered between 7 and 14 days, resume IWILFIN at the next reduced dose level. If not recovered within 14 days, permanently discontinue IWILFIN.
Anemia	<8g/dL	Withhold IWILFIN until recovery to ≥8g/dL. <ul style="list-style-type: none"> Resume IWILFIN at the same dose. If anemia recurs (<8g/dL) <ul style="list-style-type: none"> Withhold IWILFIN until recovery to ≥8g/dL. Resume IWILFIN at the next reduced dose level.
Hepatotoxicity [see Warnings and Precautions (5.2)]		
Aspartate aminotransferase increased or Alanine aminotransferase increased	AST or ALT ≥10 × ULN	Withhold IWILFIN until recovery to <10 × ULN. <ul style="list-style-type: none"> If recovered within 7 days, resume IWILFIN at the same dose. If recovered after 7 days, resume IWILFIN at the next reduced dose level.
Hearing Loss [see Warnings and Precautions (5.3)]		
Hearing loss	Clinically concerning new or worsening hearing loss compared to IWILFIN baseline audiogram	Continue dosing with IWILFIN and repeat audiogram in 3 weeks. <ul style="list-style-type: none"> If improved, continue IWILFIN at the same dose. If clinically concerning changes persist, hold IWILFIN for up to 30 days and repeat audiogram. If stable or improved, resume IWILFIN at the next reduced dose level.
Other Adverse Reactions [see Adverse Reactions (6.1)]		
Nausea, vomiting, or diarrhea	Grade 3	If symptoms respond to supportive treatment (e.g., anti-emetic, anti-diarrheal), continue dosing with IWILFIN at the same dose. <p>If symptoms do not respond to treatment,</p> <ul style="list-style-type: none"> Withhold IWILFIN until recovery to ≤ Grade 2. Resume IWILFIN at the next reduced dose level.
Other adverse reactions	Grade 3 or 4	Withhold IWILFIN until recovery to ≤ Grade 2. <ul style="list-style-type: none"> Resume IWILFIN at the next reduced dose level.
	Recurrent Grade 4	Permanently discontinue IWILFIN.

*Severity as defined by National Cancer Institute Common Terminology Criteria for Adverse Events (NCI CTCAE) version 4.03

2.5 Administration, Crushed Preparation, and Missed Dose Instructions

Administration

- Administer IWILFIN orally twice daily, with or without food, for two years or until recurrence of disease or unacceptable toxicity [see Clinical Pharmacology (12.3)].
- IWILFIN tablets can be swallowed whole, chewed, or crushed.

Crushed Preparation

- For patients who have difficulty swallowing tablets, IWILFIN can be chewed, or crushed then mixed with two tablespoons of soft food or liquid.
- Visually confirm the entire contents are consumed. If any crushed tablet particles remain in the container, mix with an additional small volume (e.g., no more than one ounce, 30 mL) of soft food or liquid.
- Discard crushed tablet preparation after one hour.

Missed Dose

- A missed dose of IWILFIN should be administered as soon as possible. If the next dose is due within 7 hours, the missed dose should be skipped.
- If vomiting occurs after taking IWILFIN, an additional dose should not be administered. Continue with the next scheduled dose.

3. DOSAGE FORMS AND STRENGTHS

Tablets: 192 mg efornithine, white to off-white, round, imprinted with “EFL” on one side and “192” on the other side.

4. CONTRAINDICATIONS

None.

5. WARNINGS AND PRECAUTIONS

5.1 Myelosuppression

IWILFIN can cause myelosuppression. In the pooled safety population [see *Adverse Reactions* (6.1)], Grade 3 or 4 neutropenia occurred in 4.2% of patients. Febrile neutropenia occurred in 0.6% of patients. Bone marrow failure occurred in 1 patient. Grade 3 or 4 thrombocytopenia occurred in 1.4% of patients. Grade 3 anemia occurred in 3.3% of patients.

Monitor blood counts including neutrophil count, platelet count, and hemoglobin level prior to administration of IWILFIN and periodically during treatment. Withhold, reduce the dose, or permanently discontinue IWILFIN based on severity [see *Dosage and Administration* (2.4)].

5.2 Hepatotoxicity

IWILFIN can cause hepatotoxicity. In the pooled safety population [see *Adverse Reactions* (6.1)], Grade 3 or 4 events of increased alanine aminotransferase (ALT) occurred in 11% of patients. Grade 3 or 4 events of increased aspartate aminotransferase (AST) occurred in 6% of patients. Grade 3 or 4 events of increased bilirubin occurred in 0.3% of patients. Increased ALT/AST leading to dose interruption or reduction occurred in 2.5% of patients. IWILFIN was discontinued due to increased ALT/AST in 0.6% of patients.

Perform liver function tests (ALT, AST, and total bilirubin) prior to the start of IWILFIN, every month for the first six months of treatment, then once every 3 months or as clinically indicated, with more frequent testing in patients who develop transaminase or bilirubin elevations. Withhold and reduce the dose or permanently discontinue IWILFIN based on severity [see *Dosage and Administration* (2.4) and *Adverse Reactions* (6.1)].

5.3 Hearing Loss

IWILFIN can cause hearing loss. In the pooled safety population [see *Adverse Reactions* (6.1)], 81% of patients had an abnormal audiogram at baseline. New or worsening hearing loss occurred in 13% of patients who received IWILFIN; hearing loss worsened from baseline to Grade 3 or 4 in 12% of patients. Tinnitus occurred in 1 patient. Hearing loss leading to dose interruption or reduction occurred in 4% of patients. New or worsening hearing loss requiring new use of hearing aids occurred in 7% of patients. IWILFIN was discontinued due to hearing loss in 1.4% of patients. Among all patients with new or worsening hearing loss during IWILFIN treatment, the hearing loss resolved to baseline in 9% of patients. Among 18 patients who experienced new or worsening hearing loss and had dose modifications, 67% (N=12) improved or resolved to baseline.

Perform audiogram prior to initiation of therapy and at 6 month intervals, or as clinically indicated, to monitor for potential hearing loss. Withhold and reduce the dose or permanently discontinue IWILFIN based on severity [see *Dosage and Administration* (2.1, 2.4)].

5.4 Embryo-Fetal Toxicity

Based on findings from animal studies and its mechanism of action, IWILFIN can cause fetal harm when administered to a pregnant woman. In animal reproduction studies, oral administration of eflornithine to pregnant rats and rabbits during the period of organogenesis resulted in embryolethality at doses equivalent to the recommended human dose.

Advise pregnant women and females of reproductive potential of the potential risk to a fetus. Advise females of reproductive potential to use effective contraception during treatment with IWILFIN and for 1 week after the last dose. Advise males with female partners of reproductive potential to use effective contraception during treatment with IWILFIN and for 1 week after the last dose [see *Use in Specific Populations* (8.1, 8.3)].

6. ADVERSE REACTIONS

The following clinically significant adverse reactions are described elsewhere in the labeling:

- Myelosuppression [see *Warnings and Precautions* (5.1)]
- Hepatotoxicity [see *Warnings and Precautions* (5.2)]
- Hearing Loss [see *Warnings and Precautions* (5.3)]

6.1 Clinical Trials Experience

Because clinical trials are conducted under widely varying conditions, adverse reaction rates observed in the clinical trials of a drug cannot be directly compared to rates in the clinical trials of another drug and may not reflect rates observed in clinical practice.

The pooled safety population described in the WARNINGS AND PRECAUTIONS reflect exposure to IWILFIN as a single agent, taken orally at doses ranging from 192 - 768 mg twice daily, based on body surface area (BSA), until disease progression, unacceptable toxicity, or for a maximum of 2 years in patients who demonstrated at least a partial response to prior multiagent, multimodality therapy for newly diagnosed or relapsed/refractory high-risk neuroblastoma in Study 3b (n=101; NCT02395666) and Study 14 (n=259; NCT02679144). Among 360 patients who received IWILFIN, 84% were exposed for 6 months or longer and 73% were exposed for greater than one year. In this pooled safety population, the most common (≥5%) adverse reactions were hearing loss (11%), otitis media (10%), pyrexia (7%), pneumonia (5%), and diarrhea (5%). The most common (≥2%) Grade 3 or 4 laboratory abnormalities were increased ALT (1%), increased AST (6%), decreased neutrophils (4.2%), and decreased hemoglobin (3.3%).

Study 3b

The safety of IWILFIN was evaluated in Study 3b [see *Clinical Studies* (14.1)]. Eligible patients were pediatric patients with high-risk neuroblastoma (HRNB) who demonstrated at least a partial response to prior multiagent, multimodality therapy including induction, consolidation, and anti-GD2 immunotherapy. Patients received IWILFIN as a single agent taken orally at doses ranging from 192 - 768 mg twice daily, based on body surface area (BSA), until disease progression, unacceptable toxicity, or for a maximum of 2 years (N=85). Among patients who received IWILFIN, 93% were exposed for 6 months or longer and 89% were exposed for greater than one year.

The median age of patients who received IWILFIN was 4 years (range: 1 to 17); 59% male; 85% White, 7% Black, 1% Asian, 8% Hispanic or Latino; 87% had International Neuroblastoma Staging System Stage 4 disease; 47% had neuroblastoma with known MYCN-amplification.

Serious adverse reactions occurred in 12% of patients who received IWILFIN. Serious adverse reactions in >1 patient included skin infection (3 patients).

Permanent discontinuation of IWILFIN due to an adverse reaction occurred in 11% of patients. Adverse reactions which resulted in permanent discontinuation of IWILFIN in >1 patient included hearing loss.

Dose reductions of IWILFIN due to an adverse reaction occurred in 8% of patients. Adverse reactions which required dose reductions in >1 patient included hearing loss.

The most common (≥5%) adverse reactions, including laboratory abnormalities, were otitis media, diarrhea, cough, sinusitis, pneumonia, upper respiratory tract infection, conjunctivitis, vomiting, pyrexia, allergic rhinitis, decreased neutrophils, increased ALT, increased AST, hearing loss, skin infection, and urinary tract infection.

Table 5 summarizes the adverse reactions in Study 3b.

Table 5: Adverse Reactions (≥5%) in Patients with HRNB Who Received IWILFIN in Study 3b

Adverse Reaction ^a	IWILFIN (n=85)	
	All Grades ^{b,c} (%)	Grade 3 (%)
Infections		
Otitis media	32	2.4
Sinusitis	13	0
Pneumonia	12	1.2
Upper respiratory tract infection	11	0
Conjunctivitis	11	0
Skin infection	7	4.7
Urinary tract infection	6	1.2
Gastrointestinal Disorders		
Diarrhea ^d	15	3.5
Vomiting	11	1.2
Respiratory Disorders		
Cough	15	0
Allergic rhinitis	11	0
General Disorders		
Pyrexia	11	1.2
Ear and Labyrinth Disorders		
Hearing loss	7	7

^a Severity as defined by CTCAE Version 4.03.

^b Grade 1 adverse events were not comprehensively collected in Study 3b.

^c No Grade 4 or 5 events were reported.

^d Includes colitis.

Clinically relevant adverse reactions in <5% of patients who received IWILFIN included rash, extremity pain, and alopecia.

Table 6 summarizes the laboratory abnormalities in Study 3b.

Table 6: Select Laboratory Abnormalities (≥1%) in Patients with HRNB Who Received IWILFIN in Study 3b

Laboratory Abnormality ^a	IWILFIN (n=85)	
	All Grades ^{b,c} (%)	Grade 3 or 4 (%)
Chemistry		
Increased ALT	9	7 ^d
Increased AST	8	6 ^d
Increased alkaline phosphatase	4.7	2.4 ^d
Decreased potassium	2.4	2.4 ^d
Decreased glucose	2.4	1.1
Decreased sodium	2.4	2.4 ^d
Increased potassium	1.2	0
Increased glucose	1.2	0
Hematology		
Decreased neutrophils	9	8
Decreased hemoglobin	4.7	2.4 ^d
Decreased white blood cells	2.4	0
Decreased platelets	1.2	0

^a Severity as defined by CTCAE Version 4.03.

^b Grade 1 adverse events were not comprehensively collected in Study 3b.

^c No Grade 5 events occurred.

^d No Grade 4 events occurred.

8. USE IN SPECIFIC POPULATIONS

8.1 Pregnancy

Risk Summary

Based on findings from animal studies and its mechanism of action [see *Clinical Pharmacology* (12.1)], IWILFIN can cause fetal harm when administered to a pregnant woman. In animal reproduction studies, oral administration of eflornithine to pregnant rats and rabbits during the period of organogenesis resulted in embryolethality at doses equivalent to the recommended human dose [see *Data*]. There are no available data on the use of IWILFIN in pregnant women. Advise pregnant women and females of reproductive potential of the potential risk to a fetus.

In the U.S. general population, the estimated background risk of major birth defects and miscarriage in clinically recognized pregnancies is 2% to 4% and 15% to 20%, respectively.

Data

Animal Data

In an embryo-fetal development study, once daily oral administration of 30, 80 or 200 mg/kg/day eflornithine to pregnant rats during the period of organogenesis (gestation day 6 to 7) resulted in reduced fetal body weights and an increase in the incidence of skeletal variations (presence of a 14th rudimentary rib, 14th full rib, 27th presacral vertebrae) at 200 mg/kg/day [approximately 0.8 to 2 times the recommended human dose of 1152 ± 384 mg/m²/day based on body surface area (BSA)]. In a dose range-finding embryo-fetal development study, pregnant rats receiving oral administration of up to 2000 mg/kg/day eflornithine during the period of organogenesis exhibited increased early resorptions and post-implantation loss beginning at 300 mg/kg/day (approximately 1 to 2 times the recommended human dose of 1152 ± 384 mg/m²/day based on BSA), with 100% post-implantation loss and no viable fetuses at ≥800 mg/kg/day (approximately ≥3 to 6 times the recommended human dose of 1152 ± 384 mg/m²/day based on BSA).

In an embryo-fetal development study in rabbits, once daily oral administration of 15, 45 or 135 mg/kg/day eflornithine to pregnant animals during the period of organogenesis (gestation day 7 to 20) resulted in reduced gravid uterine weight accompanied by increased pre-implantation and post-implantation loss, increased early resorptions, and reduced fetal body weights at 135 mg/kg/day (approximately 1 to 2 times the recommended human dose of 1152 ± 384 mg/m²/day based on BSA). Eflornithine resulted in abortions in one animal at 15 mg/kg/day (approximately 0.1 to 0.2 times the recommended human dose of 1152 ± 384 mg/m²/day based on BSA) and one animal at 135 mg/kg/day. In a dose range-finding embryo-fetal development study, pregnant rabbits receiving oral administration of up to 500 mg/kg/day eflornithine during the period of organogenesis exhibited 100% post-implantation loss and no viable fetuses at 500 mg/kg/day (approximately 4 to 8 times the recommended human dose of 1152 ± 384 mg/m²/day based on BSA). There was no clear evidence of eflornithine-related fetal malformations in rats or rabbits.

8.2 Lactation

Risk Summary

There are no data on the presence of eflornithine in human milk, the effects on the breastfed child, or on milk production. Because of the potential for serious adverse reactions in breastfed children, advise women not to breastfeed during treatment with IWILFIN and for 1 week after the last dose.

8.3 Females and Males of Reproductive Potential

Based on animal data and its mechanism of action, IWILFIN can cause fetal harm when administered to a pregnant woman

Pregnancy Testing

[see *Use in Specific Populations* (8.1)].

Verify pregnancy status in females of reproductive potential prior to initiating IWILFIN [see *Use in Specific Populations* (8.1)].

Contraception

Females

Advise females of reproductive potential to use effective contraception during treatment with IWILFIN and for 1 week after the last dose.

Males

Advise males with female partners of reproductive potential to use effective contraception during treatment with IWILFIN and for 1 week after the last dose.

8.4 Pediatric Use

The safety and effectiveness of IWILFIN have been established to reduce the risk of relapse in pediatric patients with high-risk neuroblastoma (HRNB) who have demonstrated at least a partial response to prior multiagent, multimodality therapy including anti-GD2 immunotherapy. Use of IWILFIN for this indication is supported by evidence from adequate and well-controlled studies in pediatric patients with a median age of 4 years (range: 1 to 17) [see *Adverse Reactions* (6.1), *Clinical Pharmacology* (12.3), *Clinical Studies* (14.1)].

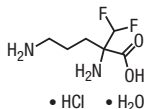
The safety and effectiveness of IWILFIN have not been established in pediatric patients for other indications [see *Indications and Usage* (1)].

8.5 Renal Impairment

Patients with moderate (eGFR <60 mL/min) and severe (eGFR <30 mL/min) renal impairment have a higher exposure to eflornithine than patients with normal renal function which can increase the risk for toxicity [see *Clinical Pharmacology* (12.3)]. Reduce the dose in patients with severe renal impairment [see *Dosage and Administration* (2.3)] Monitor patients with moderate renal impairment closely for increased adverse reactions including hepatotoxicity, myelosuppression, and hearing loss [see *Dosage and Administration* (2.4)]

11 DESCRIPTION

IWILFIN is an ornithine decarboxylase inhibitor. The chemical name of eflornithine hydrochloride is 2,5-diamino-2-(difluoromethyl) pentanoic acid hydrochloride hydrate with a molecular formula of $C_8H_{12}F_2N_2O_2 \cdot HCl \cdot H_2O$. Its molecular weight is 236.65g/mol for the salt and hydrate form and 182.17 g/mol for the anhydrous free base form. Eflornithine hydrochloride is a white to off-white powder, freely soluble in water and sparingly soluble in ethanol. The chemical structure of eflornithine hydrochloride is:



IWILFIN is available as a round, white to off-white tablet for oral administration. Each tablet contains 192 mg eflornithine, equivalent to 250 mg of eflornithine hydrochloride, and the following inactive ingredients: 220 mg silicified microcrystalline cellulose, 25 mg partially pregelatinized maize starch, 2.5 mg colloidal silicon dioxide, and 2.5 mg vegetable source magnesium stearate.

12 CLINICAL PHARMACOLOGY

12.1 Mechanism of Action

Eflornithine is an irreversible inhibitor of the enzyme ornithine decarboxylase (ODC), the first and rate-limiting enzyme in the biosynthesis of polyamines and a transcriptional target of *MYCN*. Polyamines are involved in differentiation and proliferation of mammalian cells and are important for neoplastic transformation. Inhibition of polyamine synthesis by eflornithine restored the balance of the LIN28/Let-7 metabolic pathway, which is involved in regulation of cancer stem cells and glycolytic metabolism, by decreasing expression of the oncogenic drivers *MYCN* and *LIN28B* in *MYCN*-amplified neuroblastoma. In vitro, eflornithine induced senescence and suppressed neurosphere formation in *MYCN*-amplified and *MYCN* non-amplified neuroblastoma cells, indicating a cytostatic effect. Treatment with eflornithine prevented or delayed tumor formation in mice injected with limiting dilutions of *MYCN*-amplified neuroblastoma cells.

12.2 Pharmacodynamics

Eflornithine exposure-response relationships and the time course of pharmacodynamic responses are unknown.

Cardiac Electrophysiology

At the recommended dose, IWILFIN did not result in a large mean increase (i.e., >20 ms) of the QTc interval.

12.3 Pharmacokinetics

Absorption

Following oral administrations of IWILFIN, peak plasma concentrations of eflornithine (C_{max}) were achieved (T_{max}) 3.5 hours post dosing.

Effect of Food

The C_{max} and AUC (area under the concentration-time curve) of eflornithine were not affected by food (high fat and high calories). Administration of crushed tablets in a standard pudding admixture had no effect on eflornithine exposure (C_{max} and AUC_{0-6h}).

Distribution

Eflornithine does not specifically bind to human plasma proteins. Eflornithine volume of distribution (V_z/F) is 24.3 L.

Elimination

Excretion

Terminal plasma elimination half-life of eflornithine is 3.5 hours. Clearance (CL/F) is 5.3 L/h.

Specific Populations

Pharmacokinetic analyses from patients in Study 14 suggested that age (1 year to 19 years), sex, or body surface area (0.4 m² to 2 m²), and mild hepatic impairment (bilirubin <ULN and AST-ULN or bilirubin >1 x ULN and any AST) had no clinically meaningful effects on eflornithine exposure.

Renal Impairment

Following oral administration of a single IWILFIN dose of 576 mg, exposure (AUC) of efornithine was 2-fold higher in adults with moderate renal impairment and 4-fold higher in adults with severe renal impairment when compared to adults with normal renal function.

13. NONCLINICAL TOXICOLOGY

13.1 Carcinogenesis, Mutagenesis, Impairment of Fertility

In a 2-year carcinogenicity study, once daily oral administration of efornithine to female rats did not result in drug-related neoplasms at doses up to 600 mg/kg/day (10.5 times the human C_{max} at the recommended clinical dose of 1152 ± 384 mg/m²).

Efornithine was not mutagenic in the in vitro bacterial reverse mutation (Ames) assay.

Dedicated fertility studies were not conducted with efornithine.

14. CLINICAL STUDIES

The efficacy of IWILFIN is based on an externally controlled trial comparison of Study 3b (investigational arm) and Study ANBL0032 (clinical trial-derived external control arm).

Study 3b

Study 3b (NCT02395666) was a multi-center, open label, non-randomized trial with two cohorts. Eligible patients in one cohort (Stratum 1) were pediatric patients with high-risk neuroblastoma (HRNB) who demonstrated at least a partial response to prior multiagent, multimodality therapy, including induction, consolidation, and anti-GD2 immunotherapy. A total of 105 eligible patients received IWILFIN orally twice daily, dosage based on body surface area (BSA) until disease progression, unacceptable toxicity, or for a maximum of 2 years [see *Dosage and Administration* (2.1)]. Tumor assessments were performed at 3, 6, 9, 12, 18 months, completion of treatment, and as clinically indicated. Following completion of IWILFIN therapy, patients were followed for a total duration of 7 years. The major efficacy outcome measure was event free survival (EFS), defined as disease progression, relapse, secondary cancer, or death due to any cause. An additional efficacy outcome measure was overall survival (OS), defined as death due to any cause. Study 3b was prospectively designed to compare outcomes to the historical EFS rate from Study ANBL0032 reported in published literature.

External Comparator: ANBL0032

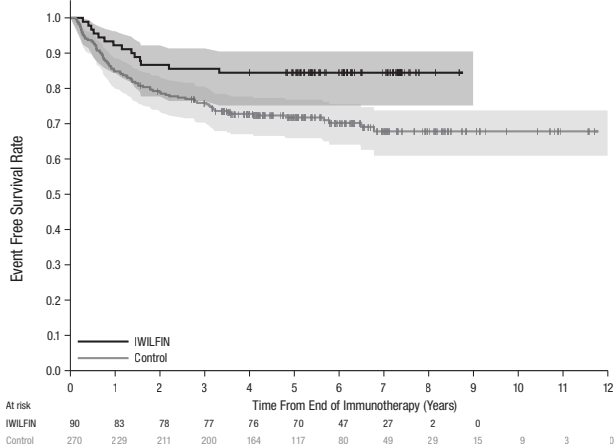
The external control arm was derived from 1,241 patients on the experimental arm of Study ANBL0032, a multi-center, open-label, randomized trial of dinutuximab, granulocyte-macrophage colony-stimulating factor, interleukin-2, and cis-retinoic acid compared to cis-retinoic acid alone in pediatric patients with HRNB previously treated with induction and consolidation therapy who achieved at least a partial response to prior autologous stem cell transplant. Tumor assessments were performed post-immunotherapy at 3, 6, 9, 12, 18, 24, 30, and 36 months, then per standard of care for a total of 10 years.

Externally Controlled Trial

The efficacy population for the comparative analysis of Study 3b and ANBL0032 included patients from both studies who were less than 21 years of age with histologic verification of HRNB and who demonstrated at least a partial response based on imaging, with no evidence of disease in the bone marrow, at the end of immunotherapy, and did not experience an EFS event prior to starting IWILFIN maintenance therapy (for Study 3b), or for at least 30 days from the end of immunotherapy (for ANBL0032). Eligible patients on Study 3b received immunotherapy on ANBL0032 or were treated off study according to the ANBL0032 protocol. Patients who met the criteria for the comparison and had complete data for specified clinical covariates were matched (1:3) using propensity scores; the matched efficacy populations for the primary analysis included 90 patients treated with IWILFIN and 270 control patients from ANBL0032. The demographic characteristics of the primary analysis population (N=360) were 59% male; median age at diagnosis 3 years (range: 0.1 to 20.1); 88% White, 6% Black, 4% Asian, 7% Hispanic. The majority of patients had Stage 4 disease (86%) and MYCN amplification was observed in 44% of tumors. End of immunotherapy responses were complete response (CR; 87%), very good partial response (VGPR; 8%), or partial response (PR; 5%).

In the protocol-specified primary analysis, the EFS hazard ratio (HR) was 0.48 (95% CI: 0.27, 0.85) and OS HR was 0.32 (95% CI: 0.15, 0.70). The Kaplan-Meier plot for the primary analysis of EFS, with shaded bands for each curve representing the point-wise 95% confidence intervals, is shown in Figure 1. Given the uncertainty associated with the externally controlled study design, supplementary analyses in subpopulations or using alternative statistical methods were performed. In these analyses, the EFS HR ranged from 0.43 (95% CI: 0.23, 0.79) to 0.59 (95% CI: 0.28, 1.27), and the OS HR ranged from 0.29 (95% CI: 0.11, 0.72) to 0.45 (95% CI: 0.21, 0.98).

Figure 1: Kaplan-Meier Curve for Event Free Survival for Protocol-Specified Primary Analysis in the Externally Controlled Trial



16. HOW SUPPLIED/STORAGE AND HANDLING

IWILFIN (effornithine) is available as 192 mg round, white to off-white tablets imprinted with EFL on one side and 192 on the other side; approximately 11 mm in diameter and supplied as follows:

- Bottle of 100 tablets containing desiccant, NDC 78670-150-01

Store at room temperature, 20°C to 25°C (68°F to 77°F), excursions permitted between 15°C to 30°C (59°F to 86°F) [see USP Controlled Room Temperature].

17. PATIENT COUNSELING INFORMATION

Advise the patient to read the FDA-approved patient labeling (Patient Information).

Myelosuppression

Inform patients and caregivers of the risk of bone marrow suppression and to promptly report any signs or symptoms of thrombocytopenia, anemia, or infection [see *Warnings and Precautions (5.1)*].

Hepatotoxicity

Inform patients and caregivers of the risk of hepatotoxicity and to promptly report any signs or symptoms of hepatotoxicity [see *Warnings and Precautions (5.2)*].

Hearing Loss

Inform patients and caregivers of the risk of hearing loss, and to promptly report any signs or symptoms of new or worsening hearing loss [see *Warnings and Precautions (5.3)*].

Embryofetal Toxicity

Inform patients and caregivers that IWILFIN can be harmful to a developing fetus and cause loss of pregnancy [see *Warnings and Precautions (5.4)*]. Advise females of reproductive potential to use effective contraception during treatment with IWILFIN and for 1 week after the last dose. Advise males with female partners of reproductive potential to use effective contraception during treatment with IWILFIN and for 1 week after the last dose [see *Use in Specific Populations (8.3)*].

Lactation

Advise women not to breastfeed during treatment with IWILFIN and for 1 week after the last dose [see *Use in Specific Populations (8.2)*].

US WorldMeds®

Distributed by:
USWM, LLC
4441 Springdale Road
Louisville, KY 40241

©2024. IWILFIN™ is a trademark of USWM, LLC.

FPI-0026.1

040-T-00684

PATIENT INFORMATION

IWILFIN™ (l-WILL-fin)

(eflornithine)

tablets

What is IWILFIN?

IWILFIN is a prescription medicine used to reduce the risk of relapse in adults and children with high-risk neuroblastoma (HRNB) who have had at least a partial response to certain prior therapies.

Before you take IWILFIN, tell your healthcare provider about all of your medical conditions, including if you:

- have hearing problems
- are pregnant or plan to become pregnant. IWILFIN can harm your unborn baby. Tell your healthcare provider right away if you become pregnant during treatment with IWILFIN or think you may be pregnant.
 - **Females** who are able to become pregnant should have a pregnancy test before starting treatment with IWILFIN. You should use effective birth control during treatment with IWILFIN and for 1 week after the last dose.
 - **Males** who have female partners who are able to become pregnant should use effective birth control during treatment with IWILFIN and for 1 week after the last dose.
- are breastfeeding or plan to breastfeed. It is not known if IWILFIN passes into your breast milk. Do not breastfeed during treatment with IWILFIN and for 1 week after the last dose.

Tell your healthcare provider about all the medicines you take, including prescription and over-the-counter medicines, vitamins, and herbal supplements.

How should I take IWILFIN?

- Take IWILFIN exactly as your healthcare provider tells you to take it.
- Take IWILFIN 2 times a day with or without food.
- Swallow tablets whole. If you cannot swallow tablets whole, IWILFIN can be chewed, or crushed then mixed with soft food or liquid. If you are crushing IWILFIN tablets:
 - IWILFIN can be crushed then mixed with 2 tablespoons of soft food or liquid.
 - Eat the entire mixture.
 - If any crushed tablet pieces remain, mix with another small amount (about 2 tablespoons) of soft food or liquid.
 - Take all of the mixture within 1 hour of mixing. Throw away any mixture left after 1 hour.
- If you miss a dose of IWILFIN, take it as soon as you remember. If it is within 7 hours of your next scheduled dose, skip the missed dose and take your next dose at your regular time.
- If you vomit after taking a dose, do not take an extra dose. Take your next dose at your regular time.

What are the possible side effects of IWILFIN?

IWILFIN may cause serious side effects, including:

- **Low blood cell counts.** IWILFIN can cause low blood cell counts and failure of your bone marrow to make enough platelets, red blood cells, or white blood cells. Your healthcare provider will monitor your blood cell counts before starting and during treatment with IWILFIN. Tell your healthcare provider right away if you develop symptoms of low blood cell counts, including:
 - fever (temperature 100.4°F or higher)
 - easy bruising or bleeding
 - blood in your urine or stools
 - feeling unusually tired or weak
 - shortness of breath
 - chills or shivering
- **Liver problems.** Your healthcare provider will do blood tests before starting, every month for the first 6 months, and regularly during treatment with IWILFIN to check your liver. Tell your healthcare provider if you develop symptoms of liver problems, including:
 - your skin or the white part of your eyes turns yellow (jaundice)
 - dark or “tea-colored” urine
 - light-colored stools (bowel movements)
 - nausea or vomiting
 - easy bruising or bleeding
 - loss of appetite
 - pain, aching, or tenderness on the right side of your stomach-area (abdomen)
- **New or worsening hearing loss.** Hearing loss is common during treatment with IWILFIN and can also be serious. Your healthcare provider will check your hearing before you start and during treatment with IWILFIN. Some people have needed to use hearing aids. Tell your healthcare provider right way if you get ringing in your ears or any new or worsening hearing loss.

The most common side effects of IWILFIN include:

- ear infection
- diarrhea
- cough
- sinus infection
- pneumonia
- upper respiratory tract infection
- red and swollen eyes (pink eye)
- vomiting
- stuffy, runny, itchy nose or sneezing (allergic rhinitis)
- fever
- skin infection
- urinary tract infection

These are not all the possible side effects of IWILFIN.

Call your doctor for medical advice about side effects. You may report side effects to FDA at 1-800-FDA-1088.

How should I store IWILFIN?

- Store IWILFIN at room temperature between 68°F to 77°F (20°C to 25°C).

Keep IWILFIN and all medicines out of the reach of children.**General information about the safe and effective use of IWILFIN:**

Medicines are sometimes prescribed for purposes other than those listed in the Patient Information leaflet. Do not use IWILFIN for a condition for which it was not prescribed. Do not give IWILFIN to other people, even if they have the same symptoms you have. It may harm them. You can ask your healthcare provider or pharmacist for information about IWILFIN that is written for health professionals.

What are the ingredients in IWILFIN?

Active ingredient: eflornithine

Inactive ingredients: silicified microcrystalline cellulose, partially pregelatinized maize starch, colloidal silicon dioxide, and vegetable source magnesium stearate.

Distributed by:
USWM, LLC 4441 Springdale Road Louisville, KY 40241
©2024, IWILFIN™ is a trademark of USWM, LLC.

For more information, go to www.IWILFIN.com or call 1-877-IWILFIN.